



INSTALL GUIDE

Porsche 718 Boxster / Cayman Sport Catalytic Converter

FS.POR.718.SC



Estimated Install Time

3 Hours

Required Tools

Ratchet wrench with a selection of extensions

22mm box wrench or O2 sensor wrench

13mm box wrench

13mm Socket

9mm Hex Bit

! STOP - IMPORTANT – PLEASE READ !

Installation of the Fabspeed Sport Catalytic Converter will require cutting the OEM system. The factory exhaust is double walled – care must be taken to not cut through both layers of metal during the cutting process. If you are unsure of your ability to successfully complete this step, please seek professional installation assistance.



CAUTION

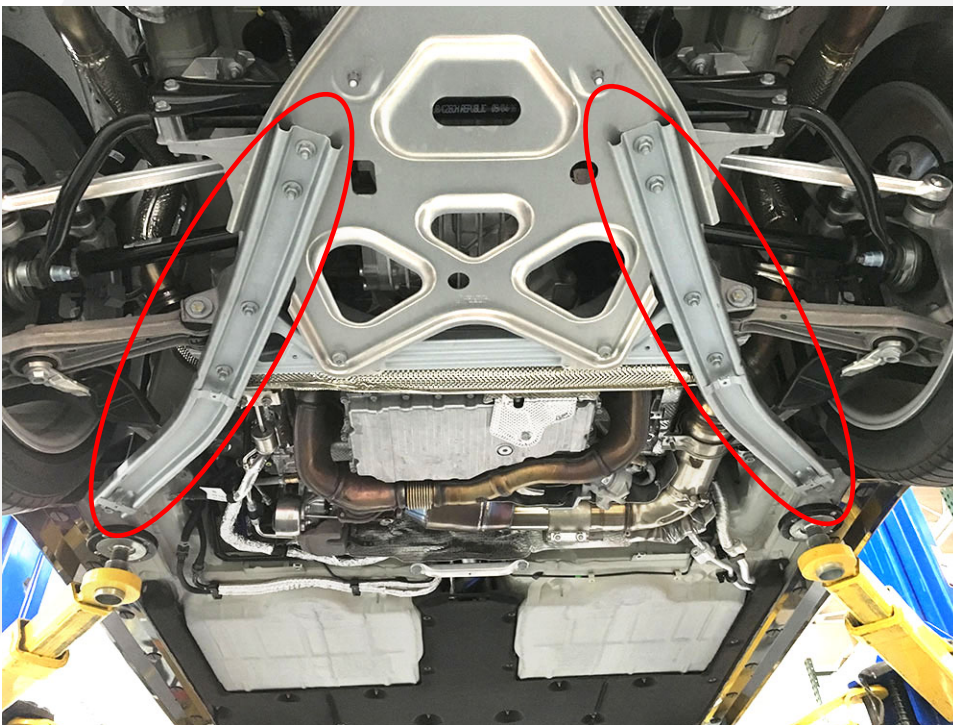
- ***Always allow car to cool before performing any installation(s) or service(s) on it.***
- ***Always be sure to work on an even and level surface when raising vehicle(s) with a jack, and support all raised vehicles with locked jack stands once elevated.***
- ***Refer to factory service manual for full details on servicing your vehicle.***
- ***Fabspeed Motorsport recommends that all installations be supervised or verified by a trained professional technician.***
- ***Fabspeed Motorsport is not responsible for any personal injury or damage(s) sustained to a vehicle during installation of aftermarket performance parts.***



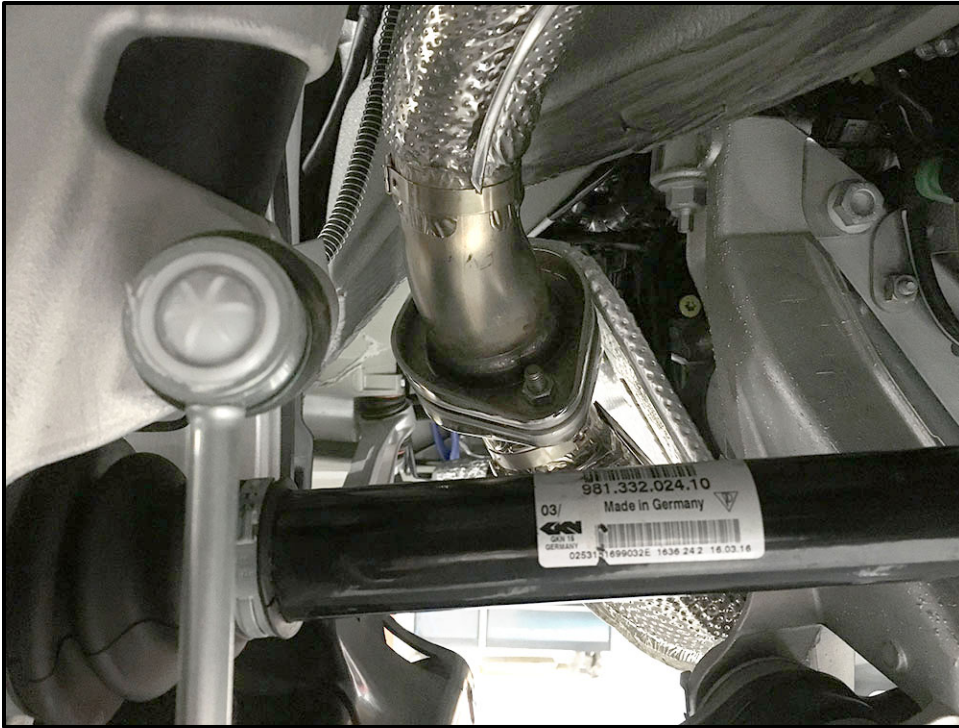
1. Place car on lift or jack stands.



2. Remove belly pan to gain access to the front exhaust section.



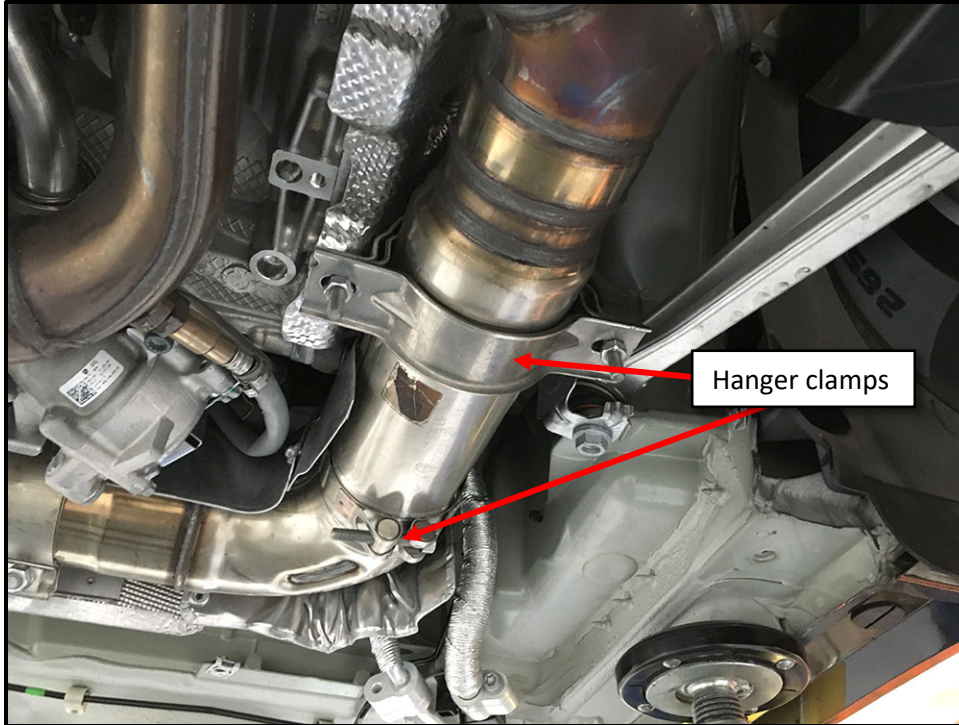
3. Remove brace supports to gain additional clearance for removing the front exhaust section.



4. Remove hardware from over axle pipes. Removing the rear wheels will provide additional access to this area.



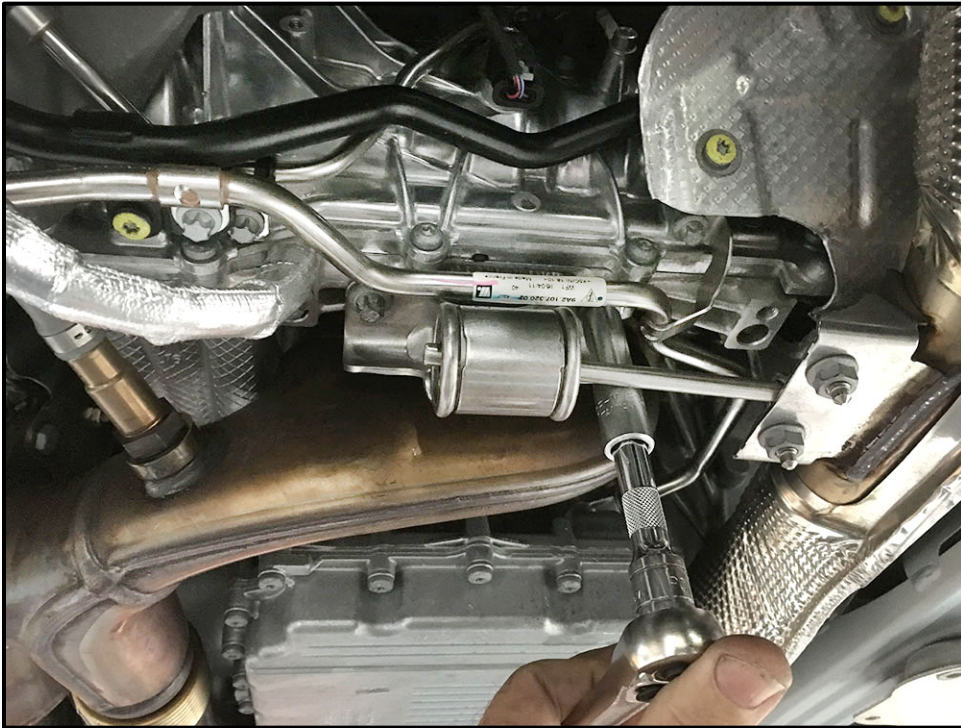
5. Remove O2 sensor from catalytic converter.



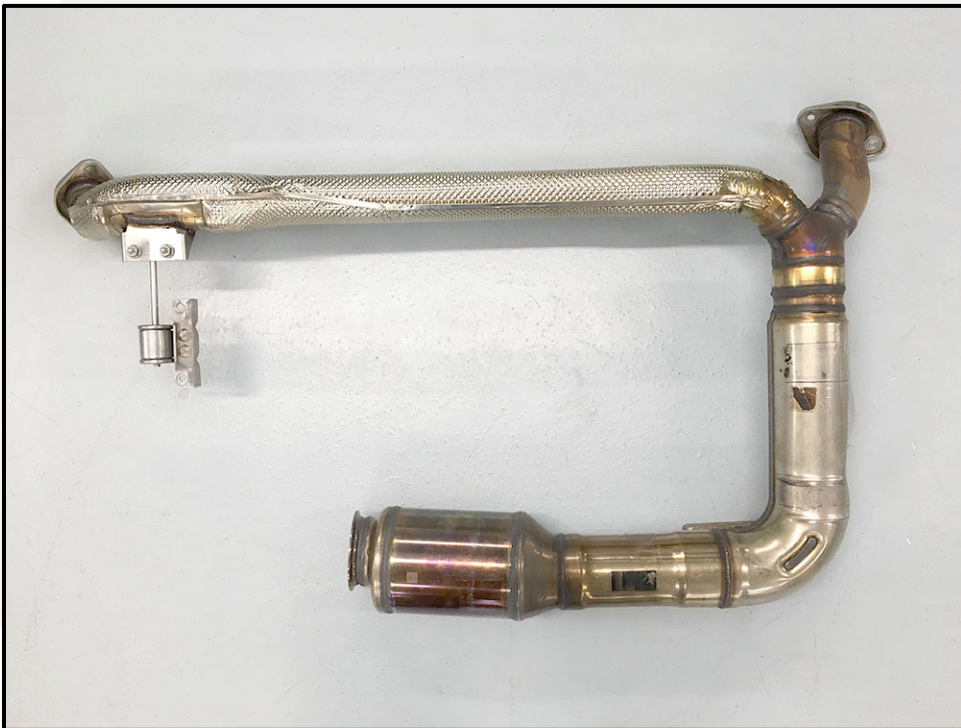
6. Remove the exhaust hanger clamps.



7. Remove V-band clamp that mounts the catalytic converter to the turbo manifold.



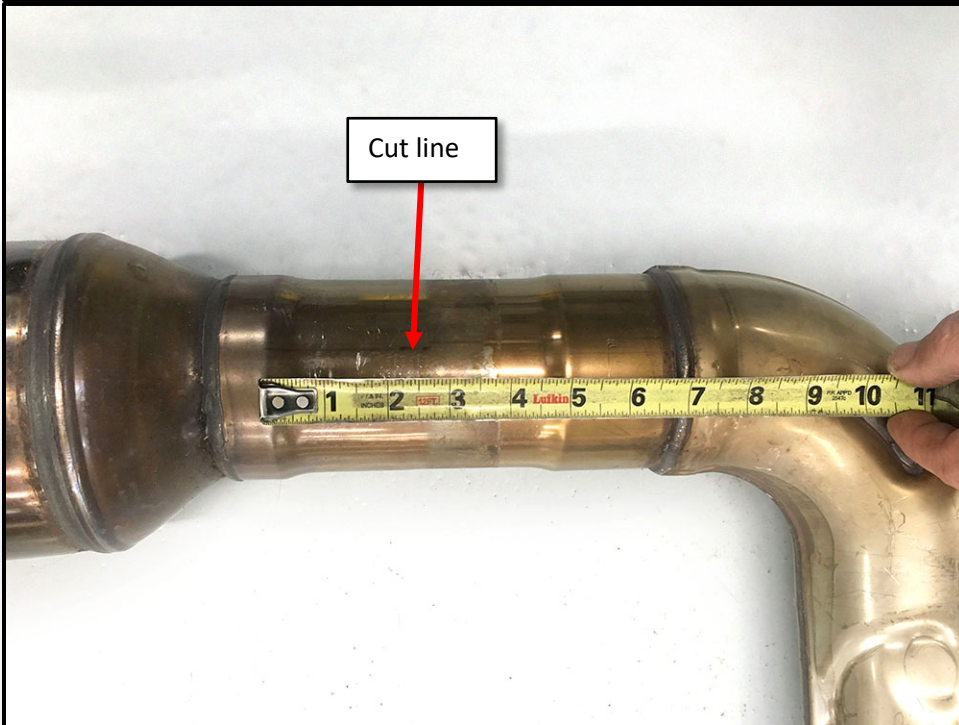
8. Remove bolts mounting the exhaust hanger to the engine.



9. You can now remove the OEM system.



10. With the OEM system removed you can now modify the opening for the O2 sensor to provide additional clearance required for your new Fabspeed Sport Cat. Fold the heat shield back to provide an additional 1" of clearance. Optionally you can trim the metal to create the space.



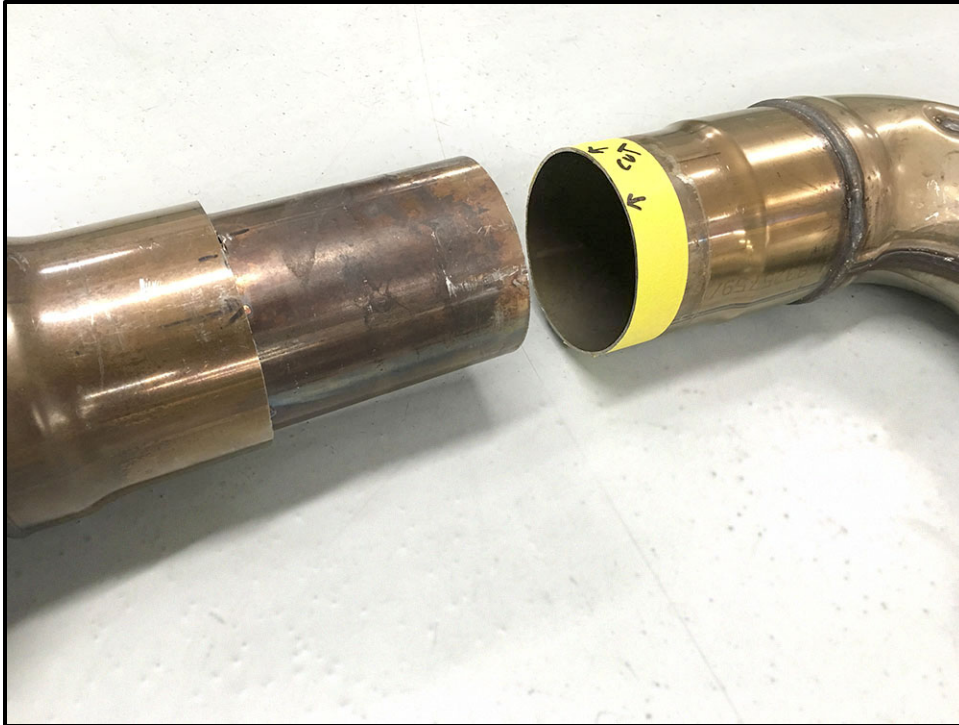
11. Next measure the OEM system to determine the cut line. There is a recessed area on OEM system that measures 5.0" in width. The cut line will be in the center of this area measurement at 2.5".



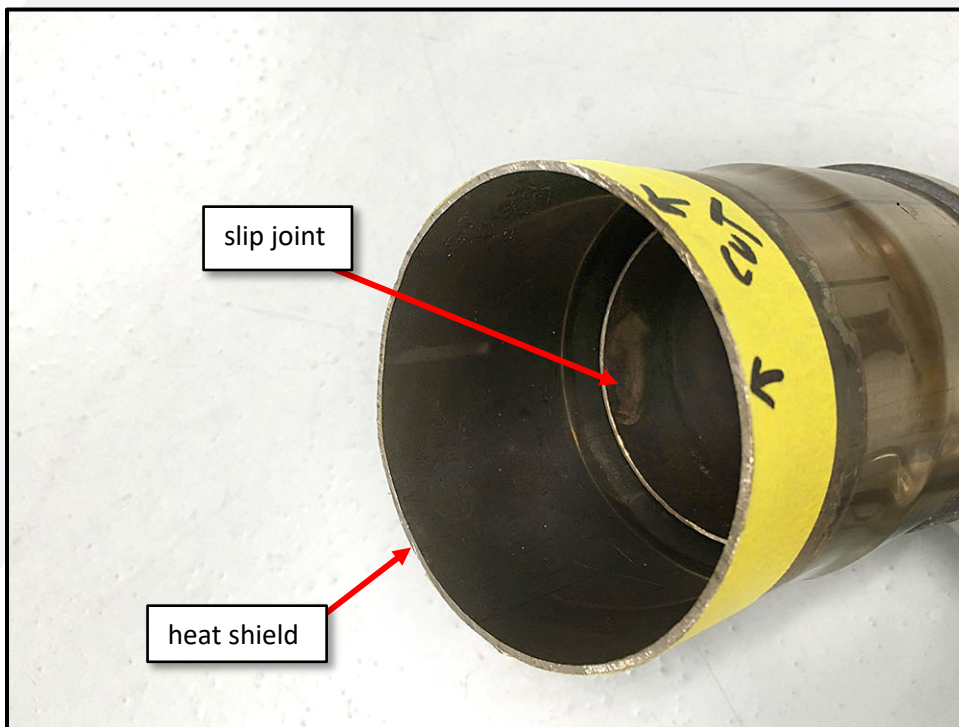
12. Use masking tape to create a straight line for cutting.



13. Use a small cutoff wheel or a large pipe cutter to cut through the outer layer of the OEM double wall exhaust tubing. The inner layer tube is $\frac{1}{4}$ " smaller radius than the outer layer so be careful not to cut too deep.



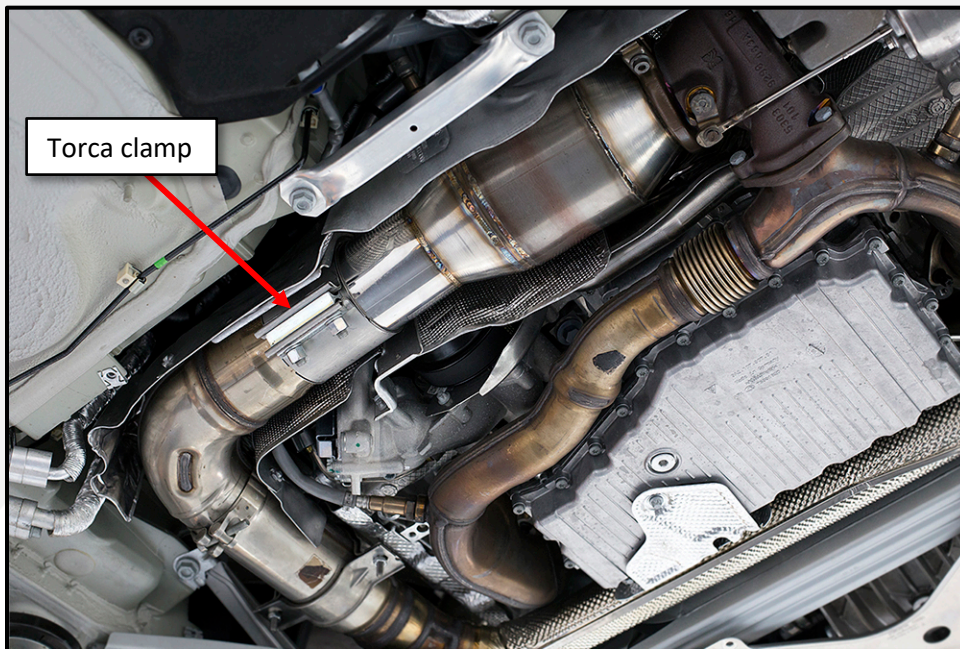
14. You can now pull the system apart. The OEM system uses a slip joint connection on the inside tube. The Fabspeed system uses the same slip joint system.



15. The internal slip joint carries the exhaust. The external tubing is a heat shield.



16. The Fabspeed Sport Cat attaches to the OEM exhaust system using the supplied Torca clamp. This clamp also allows the OEM Cat to be re-installed.



17. Install the system in the reverse order of removal. Leave the Torca clamp loose during installation. Once the full system is loosely installed tighten all bolts and clamps including the Torca clamp.



18. Re-install belly pan and wheels.
19. Enjoy your new Fabspeed Motorsport exhaust system!

If you have any questions, comments, or concerns related to your new part(s), please contact us!